

# Briv® 1801, 1804



For installation information please refer to the tooling overview and manuals on our website [www.avdel-global.com](http://www.avdel-global.com).

Pour les conditions de pose, merci de vous référer à la description de l'outil et aux manuels disponibles sur notre site Web.

Angaben zur Verarbeitung entnehmen Sie bitte der Geräteübersicht und den Betriebsanleitungen auf unserer Website.

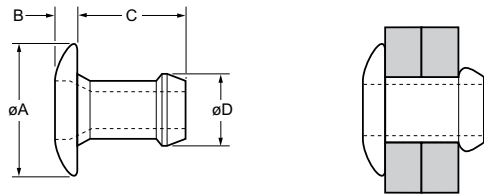
Per informazioni sull'installazione preghiamo consultare i manuali e la panoramica degli attrezzi sul nostro sito web.

Para ver información sobre máquinas de colocación, consulte nuestra página web, apartados visión general de máquinas y manuales.

English	Français	Deutsch	Italiano	Español
Dome head	Tête plate	Flachrundkopf	Testa tonda	Cabeza alomada
Aluminium alloy* (5 % Mg)	Alliage d'aluminium* (5% Mg)	Aluminium* (5 % Mg)	Lega di alluminio* (5% Mg)	Aluminio* (5% Mg)
Natural	Brut	Blank	Nessuna finitura	Natural

\*: BS 1473 5056A DIN 1725 AlMg5 Werkstoff 3.3555

Option: for 2.5 % Mg aluminium alloy replace part no. 01801 with 01861 / pour 2.5 % Mg alliage d'aluminium remplacer la série 01801 par 01861 / für 2.5 % Mg Aluminium-Legierung ersetzen Sie 01801 durch 01861 / per 2.5 % Mg lega di alluminio sostituire 01801 con 01861 / con Aluminio (2,5 % de Mg) cambiar 01801 por 01861



Ø					ØA	B	C	ØD			Fasteners per pod/ Nombre de rivets par chargeur / Niete pro Magazin / Rivetti per caricatore / Uds./ carga	natural / brut / blank / nessuna finitura / natural	anodised, dyed red / anodisé rouge / rot eloxiert / anodizzato rosso / anodizado rojo
nom.	min.	max.	min.	max.	max.	max.	max.	max.	lbf <sup>1)</sup>	lbf <sup>1)</sup>	± 1	Part No/ref	Part No/ref
3/32"	.045	.095	.093	.096	.162	.035	.157	.0923	60	100	64	01801-00304	01804-00304
	.085	.135					.197				52	01801-00306	01804-00306
	.125	.175					.237				44	01801-00308	01804-00308
	.165	.215					.277				38	01801-00310	01804-00310
	.205	.255					.317				34	01801-00312	01804-00312
	.245	.295					.357				30	01801-00314	01804-00314
	.265	.315					.377				28	01801-00315	01804-00315
	.285	.335					.397				27	01801-00316	01804-00316
	.305	.355					.417				26	01801-00317	01804-00317
1/8"	.025	.075	.1285	.1315	.257	.039	.152	.1235	170	295	59	01801-00403	01804-00403
	.045	.095					.172				58	01801-00404	01804-00404
	.065	.115					.192				50	01801-00405	01804-00405
	.085	.135					.212				48	01801-00406	01804-00406
	.125	.175					.252				42	01801-00408	01804-00408
	.165	.215					.292				37	01801-00410	01804-00410
	.205	.255					.332				33	01801-00412	01804-00412
	.245	.295					.372				29	01801-00414	01804-00414
	.285	.335					.412				26	01801-00416	01804-00416

all dimensions in inches / en pouces / alle Maße in Zoll / in pollici / en pulgadas

1) typical values / valeurs moyennes / typische Werte / Valori tipici / resistencias máximas recomendadas



[www.avdel-global.com](http://www.avdel-global.com)

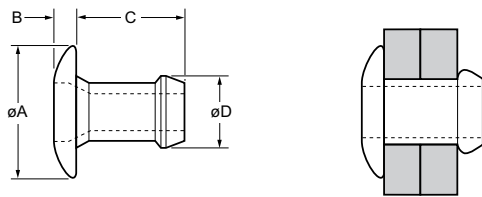
Briv® is a trademark of Avdel UK Limited

© 2010 Infastech

06.2011, page 1/2

Data shown is subject to change without prior notice as a result of continuous product development and improvement policy.  
Your local Avdel representative is at your disposal should you need to confirm latest information.

# Briv® 1801, 1804



ø					øA	B	C	øD			Fasteners per pod / Nombre de rivets par chargeur / Niete pro Magazin / Rivetti per caricatore/ Uds./carga	natural / brut / blank / nessuna finitura / natural	anodised, dyed red / anodisé rouge / rot eloxiert / anodizzato rosso / anodizado rojo
	min.	max.	min.	max.	max.	max.	max.	max.	lbf <sup>1)</sup>	lbf <sup>1)</sup>	± 1	Part No/ref	Part No/ref
5/32"	.062	.115	.1562	.1592	.322	.039	.193	.1525	255	390	52	01801-00505	01804-00505
	.085	.135					.213				49	01801-00506	01804-00506
	.105	.155					.233				44	01801-00507	01804-00507
	.145	.195					.273				39	01801-00509	01804-00509
	.185	.235					.313				34	01801-00511	01804-00511
	.225	.275					.353				31	01801-00513	01804-00513
	.265	.315					.393				26	01801-00515	01804-00515
	.305	.355					.433				24	01801-00517	01804-00517
3/16"	.065	.130	.1910	.1940	.382	.046	.212	.1875	340	616	46	01801-00606	01804-00606
	.080	.155					.240				42	01801-00607	01804-00607
	.145	.205					.290				35	01801-00609	01804-00609
	.195	.255					.340				31	01801-00611	01804-00611
	.245	.305					.390				27	01801-00613	01804-00613
	.295	.355					.440				24	01801-00615	01804-00615
	.345	.405					.490				22	01801-00617	01804-00617
	.395	.455					.530				20	01801-00619	01804-00619
6.0 mm	.105	.155	.2338	.2373	.455	.053	.273	.2325	380	740	37	01801-06007	
	.145	.195					.313				33	01801-06009	
	.185	.235					.353				29	01801-06011	
	.225	.275					.393				26	01801-06013	
	.265	.315					.433				24	01801-06015	
	.305	.355					.473				23	01801-06017	

all dimensions in inches / en pouces / alle Maße in Zoll / in pollici / en pulgadas

1) typical values / valeurs moyennes / typische Werte / Valori tipici / resistencias máximas recomendadas